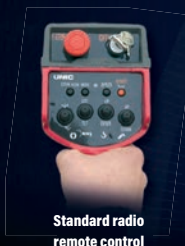


URW-806

(8.0t x 1.7m) / (6.0t x 3.0m)

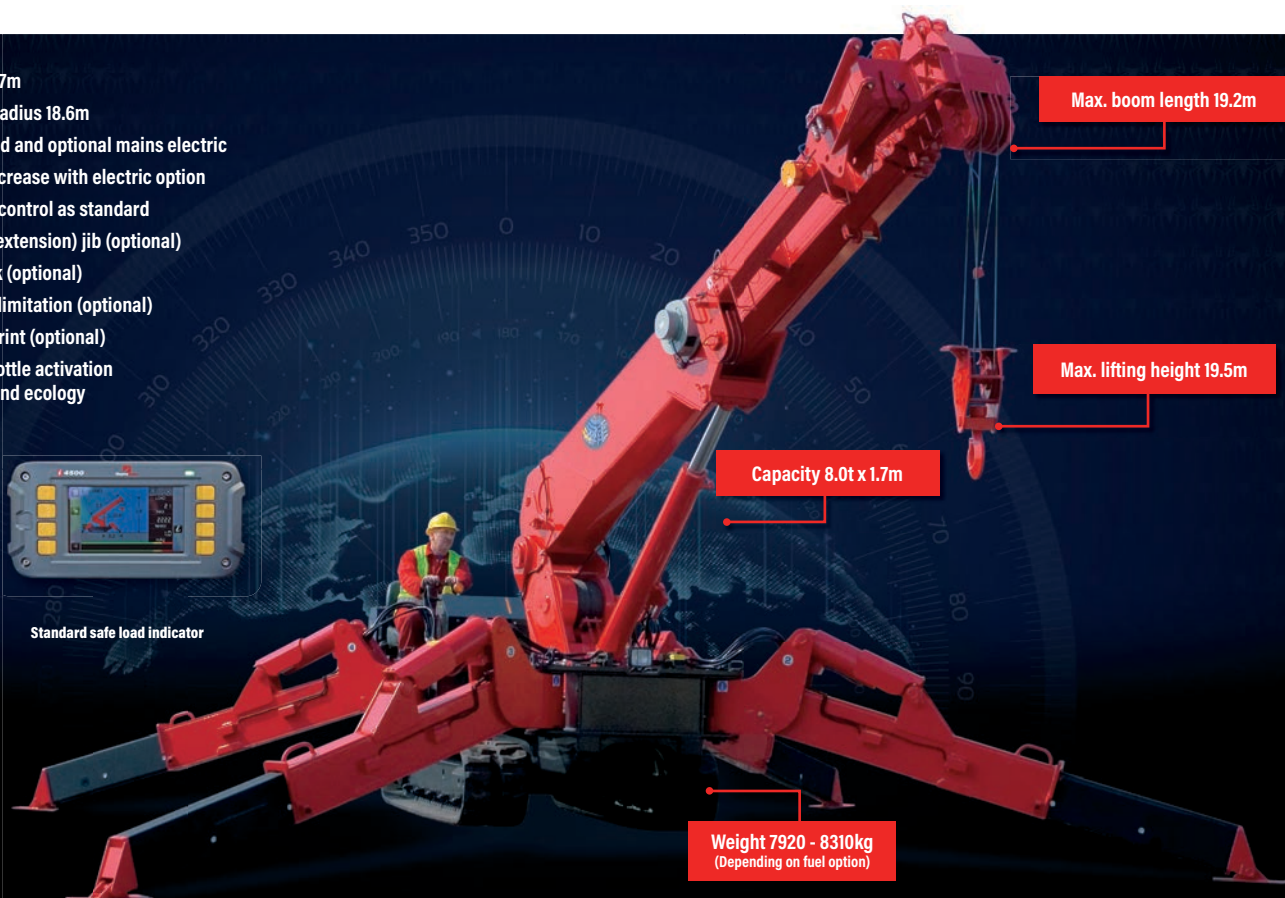
- Total width 1.67m
- Max working radius 18.6m
- Diesel powered and optional mains electric
- Zero length increase with electric option
- Radio remote control as standard
- Stowable fly (extension) jib (optional)
- Searcher hook (optional)
- Working area limitation (optional)
- Variable footprint (optional)
- Intelligent throttle activation for economy and ecology



Standard radio remote control



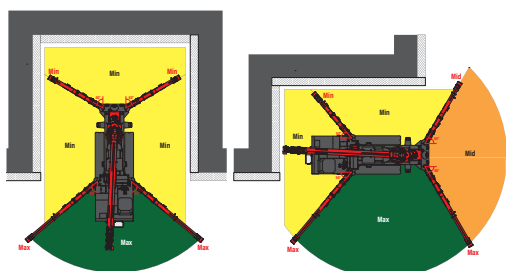
Standard safe load indicator



The URW-806 is a lifting heavyweight in the mini crane world. With an 8 tonne capacity at 1.7m and a hook height of 19.5m it is one of the highest capacity UNIC cranes in the range, yet at 1670mm wide it is still narrow enough to gain access through an industrial double doorway. For added lifting flexibility the URW-806 also features an optional searcher hook and a 3.1m long swing away fly jib, providing a maximum hook height of 22.7m.



OPTIONAL VARIABLE FOOTPRINT INCLUDING SLEW & HEIGHT LIMITATION



CRANE SPECIFICATIONS

Crane capacity	capacity:	8.0t x 1.7m
Max working radius	max:	18.6m
Max lifting height	approx:	19.5m (22.7m with second stage manual fly jib)
Rope length	max:	17.7m (6 fall), 23.75m (4 fall), 49.5m (2 fall), 101m (1 fall)
Dimensions	folded:	5610mm (l) x 1670mm (w) x 2185mm (h)
Weight	unladen:	7920kg (8080kg with electric option) (8310kg with searcher hook and fly jib attached)
Point loadings	Due to the many variables involved, point loadings are only available on request	
Hook speed	approx:	11m/min (with 5 layers and 6 falls)
Telescopic system	boom length:	4.80 - 19.20m
	telescoping speed:	14.4m/52 seconds
	boom type:	6 section hydraulically telescoping boom, hexagonal box construction
Derricking angle/speed	approx:	0 - 80° /16.0 seconds
Slewing angle/speed	approx:	360° (continuous) 2.5min rpm
Traction system	drive:	hydrostatic 2-speed, stepless forward and reverse
	travel speed:	0 - 2.9km/h
	gradeability:	± 20° (vertical) 20° (traverse)
	track ground length:	2240mm
	track ground pressure:	43.6kPa (0.44kg/cm ²)
	track width:	400mm
Engine	manufacturer:	Mitsubishi
	fuel:	diesel (electric dual power option)
	maximum output:	23.5kW (32.0PS) / 2500min rpm
	starting method:	electric
	tank capacity:	74 litres
Electric motor	power:	75kW
	voltage:	400v AC 50/60hz
Standard equipment	computer controlled moment limiter (safe load indicator), radio remote control, overwinding alarm, computer controlled intelligent voice warning system, multi-function operation by radio remote control, intelligent throttle activation, automatic hook stow, overload warning alarms, overload warning lamps	
Optional equipment	1 fall hook block, 2 fall hook block, mains electric dual power (400v), low marking tracks, slew limitation, searcher hook 800kg, fly jib 800kg with single part line, bellypack radio remote control, data logging, forward facing camera, variable footprint option, working area limitation, bellypack radio remote control	

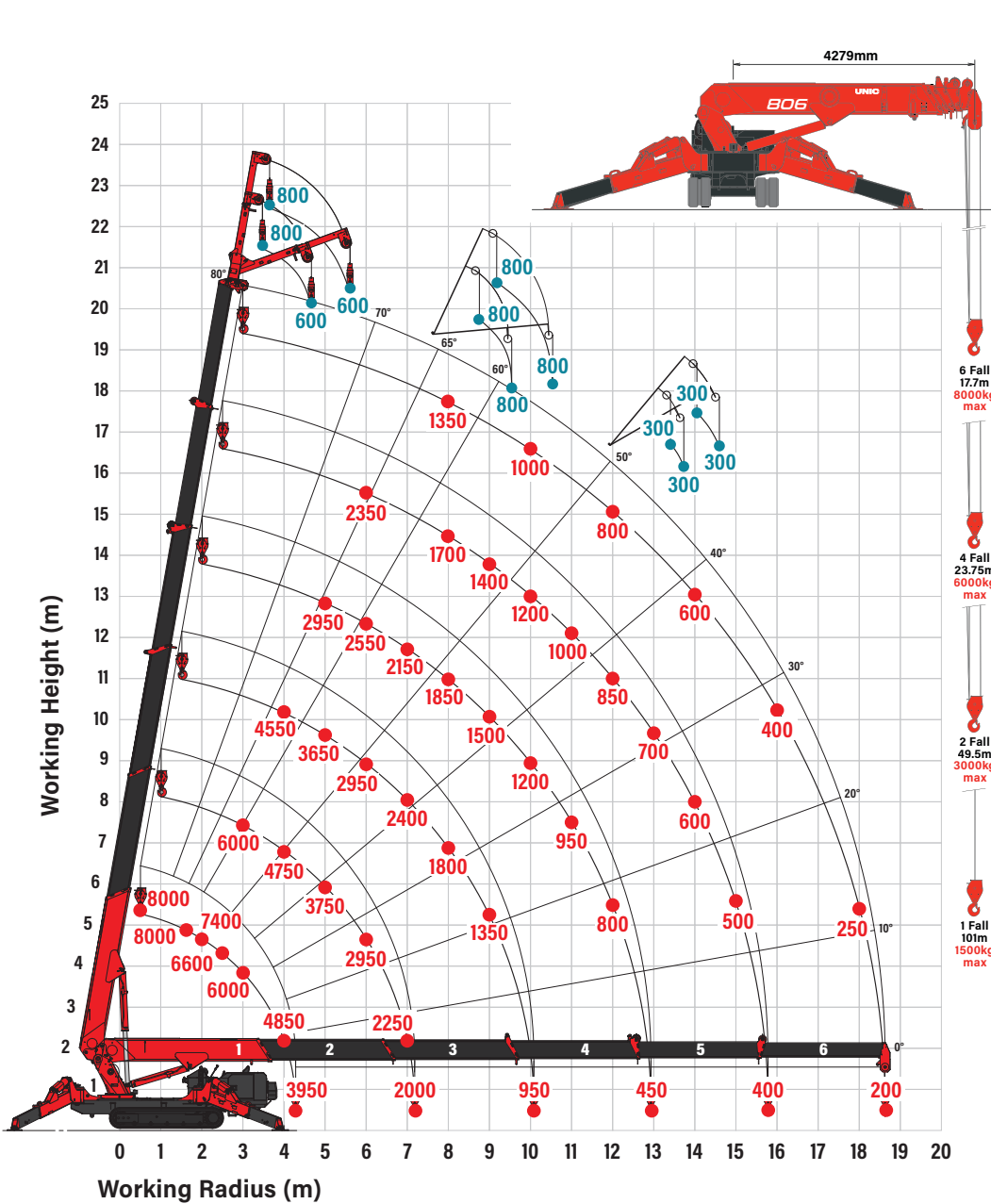
MINI SPIDER CRANE



Spec Sheet

UNIC
CRANES EUROPE

RATED LOADS (kg) & HOOK FALLS



SEARCHER HOOK - 800kg



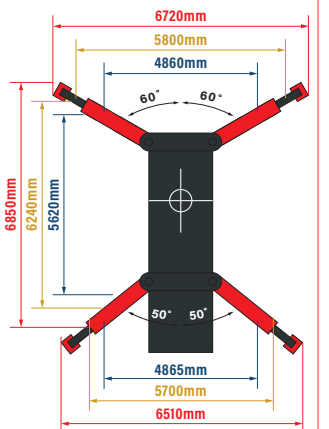
Capacity 800kg
Length 2.21m
Tilt angles 0°, 20°, 40°, 60°

FLY JIB - 800kg



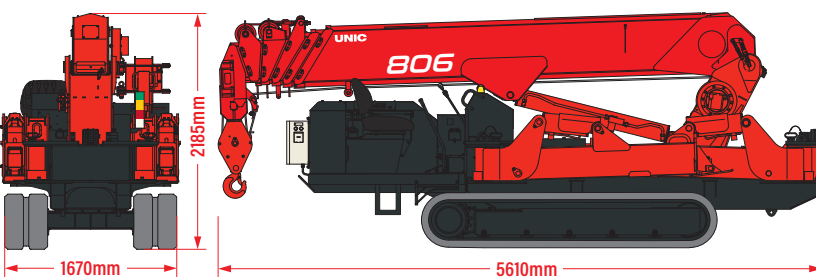
Capacity 800kg
Length 2.1-3.1m
Tilt angles 0°, 20°, 40°, 60°

OUTRIGGER MIN, MID & MAX



■ MAX OUTRIGGERS
■ MID OUTRIGGERS ■ MIN OUTRIGGERS

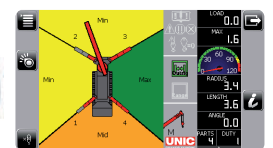
DIMENSIONS



OPTIONS



Optional bellypack radio remote control



Optional variable footprint safe load indicator