

URW-546

(4.0t x 2.5m)

- Total width 1.4m
- Max working radius 15.52m
- Tier 4 diesel engine powered and optional mains electric
- Zero length increase with electric option
- Operator control of outrigger extension
- Intelligent voice warning system
- Radio remote control as standard
- Working area limitation (optional)
- Variable footprint (optional)
- Intelligent throttle activation for economy and ecology

Standard radio remote control

Optional radio remote control with digital feedback

Safe load indicator

Optional Variable Footprint safe load indicator

Max. Boom Length 15.71m

Capacity 4.0t x 2.5m

Max. Lifting Height 16m

Weight 4940 - 5090kg

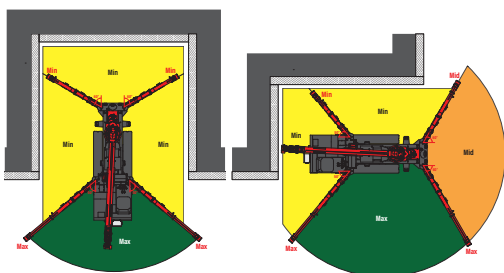
Optional fly jib & searcher hook

Capacity	700kg (max)
Length	2017mm
Weight	50kg
Tilt angles	0°, 20°, 40°, 60°



The URW-546 offers an optimal combination of working flexibility and heavy lifting power. This crane is capable of lifting 4t at 2.5m and features a maximum lifting height of 16m. The URW-546 sees the addition of a clean emissions, tier 4 diesel engine. The URW-546 mini crane can be controlled from the driver's seat or via a radio remote control for precise lifting and placement of loads. At 1.4m wide, the UNIC URW-546 is ideal for passing through internal industrial doorways and working in confined areas where working space may be limited.

OPTIONAL VARIABLE FOOTPRINT INCLUDING SLEW & HEIGHT LIMITATION

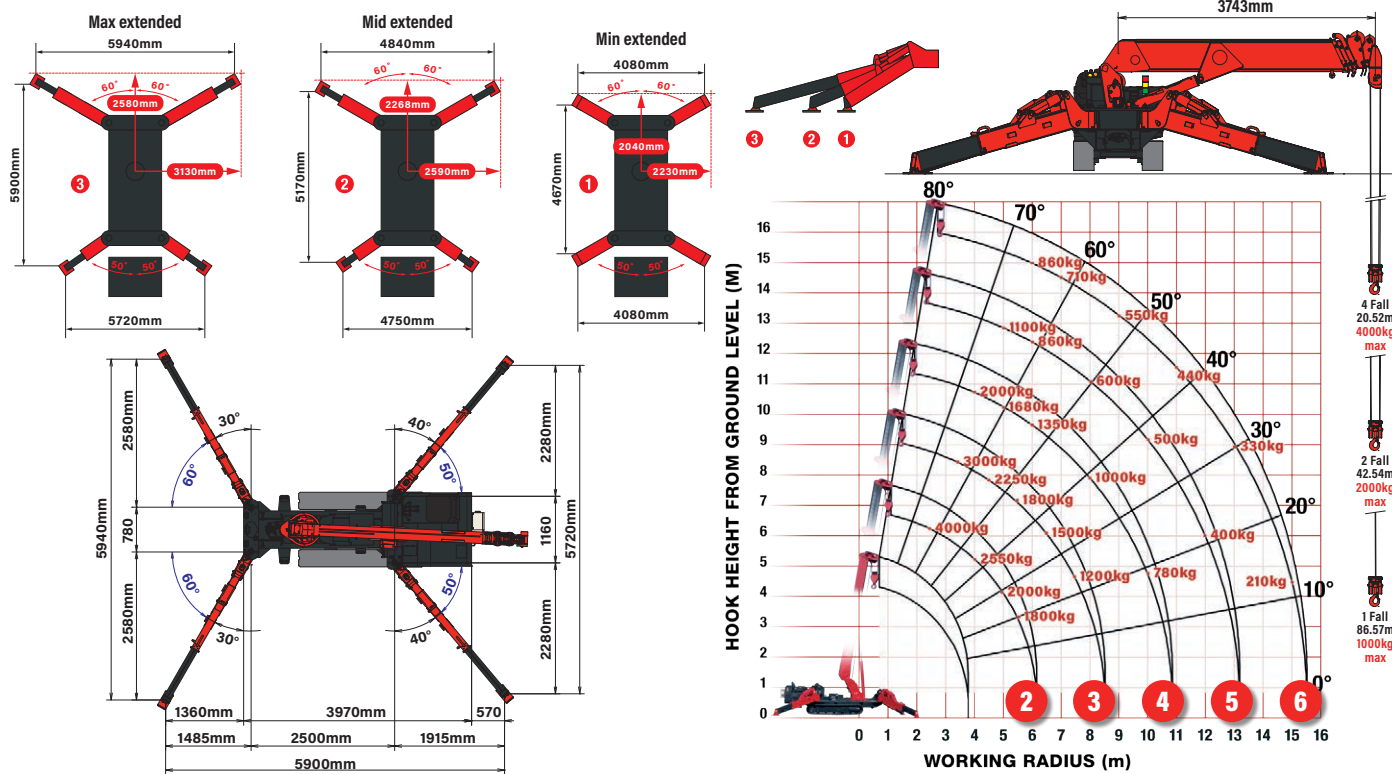


CRANE SPECIFICATIONS

Crane capacity	capacity:	4.0t x 2.5m
Max working radius	max:	15.52m
Max lifting height	approx:	16m (17.79m with fly jib, 18.46m with fixed hook)
Rope length	max:	20.52m (4 fall), 42.54m (2 fall), 86.57m (1 fall)
Dimensions	folded:	4870mm (l) x 1400mm (w) x 2035mm (h)
Weight	unladen:	4940kg (5090kg with electric option)
Point loadings	Due to the many variables involved, point loadings are only available on request	
Hook speed	approx:	11m/min (with 4 layers and 4 falls)
Telescopic system	boom length:	3.93 - 15.71m
	telescoping speed:	11.78m / 35 seconds
	boom type:	6 section hydraulically telescoping boom, hexagonal box construction
Derricking angle/speed	approx:	0 - 80° / 18.0 seconds
Slewing angle/speed	approx:	360° (continuous) 2.5min rpm
Traction system	drive:	hydrostatic 2-speed, stepless forward and reverse
	travel speed:	0 - 3km/h
	gradeability:	± 20° (vertical), 20° (traverse)
	track ground length:	1750mm
	track ground pressure:	46.1 kPa (0.47kg/cm ²)
	track width:	300mm
Engine	manufacturer:	Tier 4 Yanmar
	fuel:	diesel
	maximum output:	178kW (23.9PS) / 3000min rpm
	starting method:	electric
	tank capacity:	40 litres
Electric dual power option	power:	75kW
	voltage:	400v AC 50/60Hz
Standard equipment	computer controlled moment limiter (safe load indicator), radio remote control, overwinding alarm, computer controlled intelligent voice warning system, multi-function operation by radio remote control, intelligent throttle activation, automatic hook stow, overload warning alarms, overload warning lamps	
Optional equipment	1 fall hook block, 2 fall hook block, mains electric dual power (400v), low marking tracks, slew limitation, searcher hook small 500kg, searcher hook 700kg, fly jib 700kg with single part line, radio remote control with feedback display, data logging, forward facing camera, variable footprint option, working area limitation	

MINI SPIDER CRANE

MAIN BOOM RATED LOADS WITH OUTRIGGERS SET TO MAX & OUTRIGGER POSITIONS



SECOND STAGE EXTENDED 3.93 - 6.33m BOOM LENGTH

Working radius	m	up to 2.5	3.0	3.5	4.0	4.5	5.0	5.5	6.0	6.14	
Outrigger	Max-extended	kg	4000	3450	3000	2550	2250	2000	1800	1630	1600
	Mid-extended	kg	4000	3450	3000	2450	2100	1850	1700	1400	1350
	Min-extended	kg	4000	3450	3000	2400	2000	1650	1350	1100	1000

THIRD STAGE EXTENDED 6.33 - 8.72m BOOM LENGTH

Working radius	m	up to 3.5	4.0	4.5	5.0	5.5	6.0	6.5	7.0	7.5	8.0	8.53	
Outrigger	Max-extended	kg	3000	2550	2250	2000	1800	1650	1500	1350	1200	1100	1000
	Mid-extended	kg	3000	2400	2100	1850	1700	1400	1200	1050	850	750	620
	Min-extended	kg	3000	2400	2000	1650	1350	1100	900	750	600	500	450

FOURTH STAGE EXTENDED 8.72 - 11.05m BOOM LENGTH

Working radius	m	up to 4.0	4.3	4.5	5.0	5.5	6.0	7.0	8.0	9.0	10.0	10.9	
Outrigger	Max-extended	kg	2000	2000	1880	1680	1500	1350	1150	1000	900	780	650
	Mid-extended	kg	2000	2000	1800	1600	1450	1300	1050	700	600	450	390
	Min-extended	kg	2000	2000	1800	1600	1350	1100	750	500	400	300	250

FIFTH STAGE EXTENDED 11.05 - 13.38m BOOM LENGTH

Working radius	m	up to 5.0	5.5	6.0	7.0	8.0	9.0	10.0	11.0	12.0	13.20	
Outrigger	Max-extended	kg	1100	950	860	710	600	550	500	450	400	350
	Mid-extended	kg	1100	950	860	700	600	520	450	390	300	250
	Min-extended	kg	1100	950	860	700	500	400	300	250	200	170

SIXTH STAGE EXTENDED 13.38 - 15.71m BOOM LENGTH

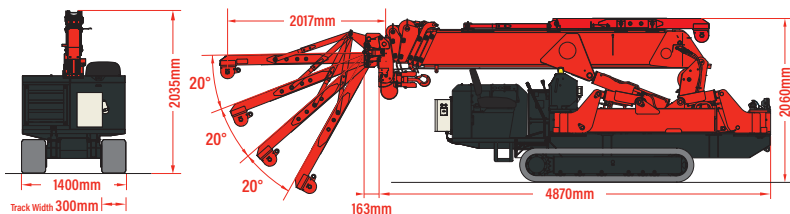
Working radius	m	up to 6.0	7.0	8.0	9.0	10.0	11.0	12.0	13.0	14.0	15.0	15.52	
Outrigger	Max-extended	kg	860	710	600	550	500	440	390	330	270	210	160
	Mid-extended	kg	860	500	350	300	270	250	220	200	170	160	150
	Min-extended	kg	860	500	350	300	250	230	200	170	150	120	100

SEARCHER HOOK SMALL - 500kg



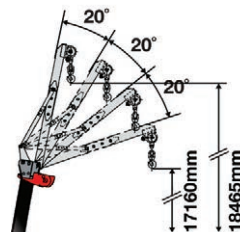
Lifting capacity	500kg sections 1-5
	480kg section 6
Length	800mm
Weight	20kg
Tilt angles	0°, 20°, 40°, 60°

DIMENSIONS



SEARCHER HOOK

Maximum Load 700kg (radius rated)



FLY JIB

Maximum Load 700kg (angle rated)

