

# UM445

(4.0t x 1.8m) / (3.67t x 2.0m)

- Total width 0.75m
- Non-marking tracks
- Max working radius 15.7m
- Max lifting height 17.5m
- Powered by a maintenance free 160Ah lithium-ion battery
- Continuous operation while charging
- Auto-levelling system making setup easy
- Pick & carry capacity: 500kg
- Five-section derricking boom & four-section telescoping jib
- Unique pop-up column reduces rear swing overhang
- Full colour, high resolution i4500 SLI system
- Five position, three extension variable outrigger system
- Backpack radio remote control with high-resolution display
- Intelligent power activation for economy and ecology
- Low noise output
- Zero emissions



Full safe load indicator



Powered by lithium-ion technology and a high-capacity battery pack with the ability to charge while in operation, the UM445 Pop-Up Crane ensures sustained power, contributing to reduced carbon emissions and eco-friendly, green lifting practices.

Its extendable tracks provide heightened stability and manoeuvrability, facilitating seamless navigation across many terrains. Standard features include a 2.9m – 10.0m main boom and a hydraulic telescoping luffing jib/searcher hook attachment with a maximum capacity of 1500kg, extension range from 2.0m to 5.7m, and a luffing range of -10° to 160° offset. With these capabilities, the UNIC UM445 achieves an impressive maximum lifting height of 17.5m and a maximum working radius of 15.7m.

The flexible variable outrigger design, featuring five offsettable angles and three extensions, allows operation in tighter spaces without compromising load ratings. The pop-up turret design reduces the rear overhang, enabling the crane to work closer to walls and obstacles.

Fully radio remote-controlled, the UM445 ensures a swift and precise setup for lifting operations, travelling, setup, outrigger deployment, auto-levelling, and pick and carry modes. Additionally, the UM445 comes with non-marking tracks as standard to prioritise surface protection.

## BELLYPACK RADIO REMOTE CONTROL WITH FULL COLOUR DISPLAY



The ergonomic Bellypack Radio Remote is the latest way for operators to manoeuvre their UNIC crane. Observe and control the spider crane functions with the aid of a full colour 4.3" high-resolution display and six linear levers, giving operators smooth and precise movements.

The Bellypack comes with secure communications and auto-frequency management between the transmitter and receiver, ensuring no other remote can unintentionally affect the crane.

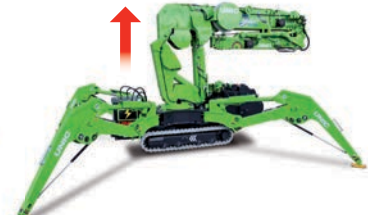
## UNIQUE FEATURE OF THE UM445 POP-UP SPIDER CRANE



**1** The compact UM445 with its expandable tracks for improved stability can be manoeuvred easily into position by the operator. Taking the width from 1100mm to 750mm gives users the option to manoeuvre through suitable doorways.



**2** The variable outriggers of the UM445 give operators the ability to position the outriggers where needed in confined areas or around obstacles on-site. Additionally, with the variable outriggers users can unlock even more performance with Max+ capacities.



**3** The position of the unique pop-up column means the UM445 has increased stability. It also offers the ability to work closer to walls and obstacles than its closest competitor, due to the minimal overhang of the column.



**4** The 1500kg capacity 4-section telescopic hydraulic jib of the UM445 takes the maximum hook height from 10.5m to 17.5m, and the maximum working radius from 9.82m to 15.7m.

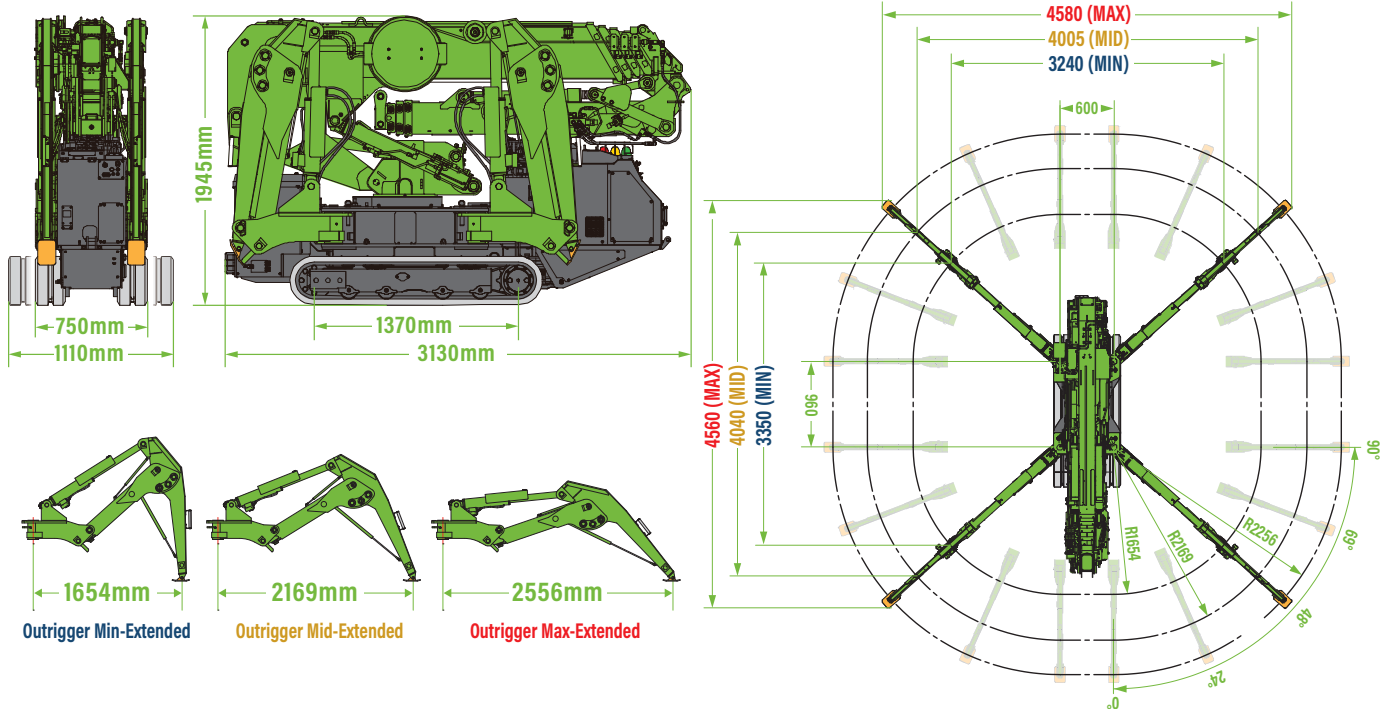
# LITHIUM-ION MINI CRANE WITH HYDRAULIC JIB



Spec Sheet

**UNIC**  
CRANES EUROPE

## CRANE & OUTRIGGER RADIUS DIMENSIONS



## CRANE SPECIFICATIONS

<b>Crane capacity</b>	max:	4.0t x 1.8m
<b>Max working radius</b>	max:	9.8m (15.7m with hydraulic jib, 15.6m with searcher hook)
<b>Max lifting height</b>	approx:	10.9m (16.4m with hydraulic jib, 17.5m with searcher hook)
<b>Rope length</b>	rope:	8mm x 59m
<b>Dimensions</b>	folded:	3130mm (l) x 750mm (1110mm) (w) x 1945mm (h)
<b>Weight</b>	unladen:	3830kg
<b>Point loadings</b>	Due to the many variables involved, point loadings are only available on request	
<b>Hook speed</b>	approx:	6.0 (9.0)m/min (4-fall), 12.0 (18.0)m/min (2-fall), 24.0 (36.0)m/min (1-fall)
<b>Main boom</b>	boom length: telescoping speed: boom type:	2.895 - 10.075m 7.18m/34 seconds 5 section, hydraulically telescoping boom, hexagonal box construction
<b>Jib</b>	max capacity: jib length: telescoping speed: jib type:	1500kg 1.98 - 5.74m 3.76m/21 seconds 4 section, hydraulically telescoping jib, box construction
<b>Slewing angle/speed</b>	approx:	360° (continuous) 1.2 rpm
<b>Traction system</b>	drive: travel speed: gradeability: track ground length: track ground pressure: track width:	hydrostatic 2-speed, stepless forward and reverse 0 - 2.0km/h ± 20° (vertical) 10° (traverse) 1370mm 68.2kPa (0.70kg/cm <sup>2</sup> ) 200mm
<b>Battery</b>	type: pack voltage: pack capacity: pack composition:	lithium-ion battery DC 51.2V 160Ah 4 series x 3 parallel
<b>Battery charger</b>	input voltage: input current: output voltage: output current: charging time:	AC95~265V (50-60Hz), single-phase 16A (AC200V), 15A (AC100V) DC 56.0V 60A (AC200V), 30A (AC100V) 3.0 hr (AC200V), 6.2 hr (AC100V)
<b>Standard equipment</b>	computer controlled moment limiter (safe load indicator), radio remote control with feedback display, overwinding alarm, computer controlled intelligent voice warning system, multi-function operation by radio remote control, intelligent power activation, automatic hook stow, overload warning lamps, variable outriggers, virtual wall, slew, height and radius range limitation, non-marking tracks, 4-fall hook block, single-line hook, searcher hook, extendable tracks, bellypack radio remote control with 4.3" high-resolution display	

## DESIGNED FOR ENCLOSED AREA LIFTING

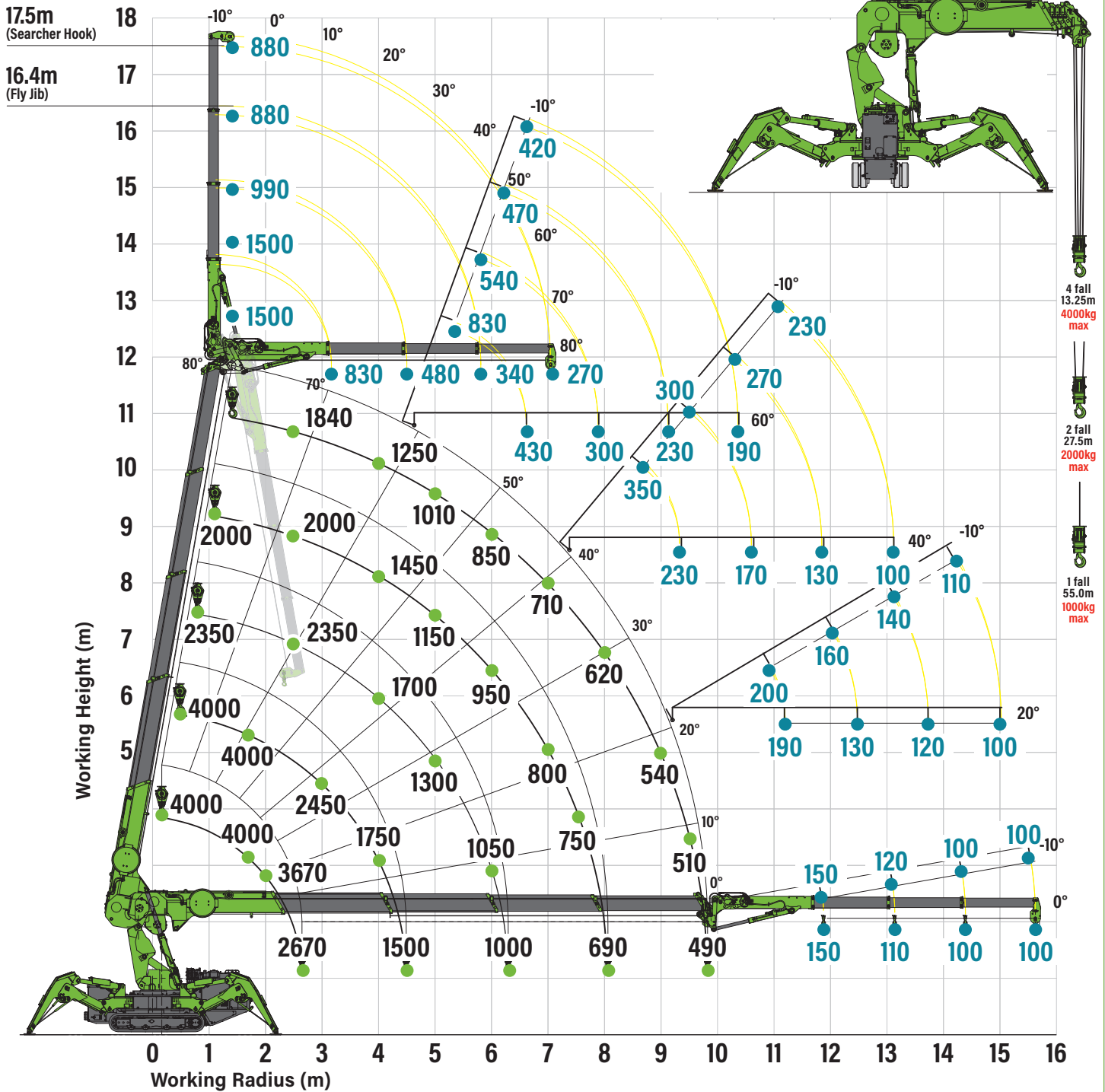
The pop-up turret design enables the crane to be used closer to walls and obstacles than ever before by reducing the rear overhang, providing maximum versatility. The new, increased flexible variable outrigger design features five different off settable angles and three different extensions, allowing the UNIC UM445 to work in tighter, more restricted areas while maintaining excellent load ratings.



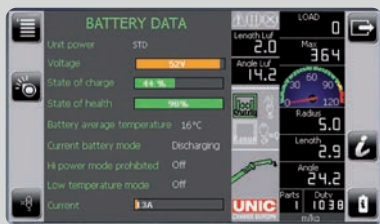
# UM445

(4.0t x 1.8m) / (3.67t x 2.0m)

## RATED LOADS (kg) & HOOK FALLS



Charge the UM445 while working with a 110/240v supply



Battery data & diagnostics information

### NON-MARKING EXTENDABLE TRACKS



The extendable tracks enable enhanced stability and manoeuvrability, allowing the crane to navigate various terrains with ease.

Non-marking tracks are included as standard, to reduce the impact on delicate surfaces, ensuring a tidy and professional work environment.

750-1110mm

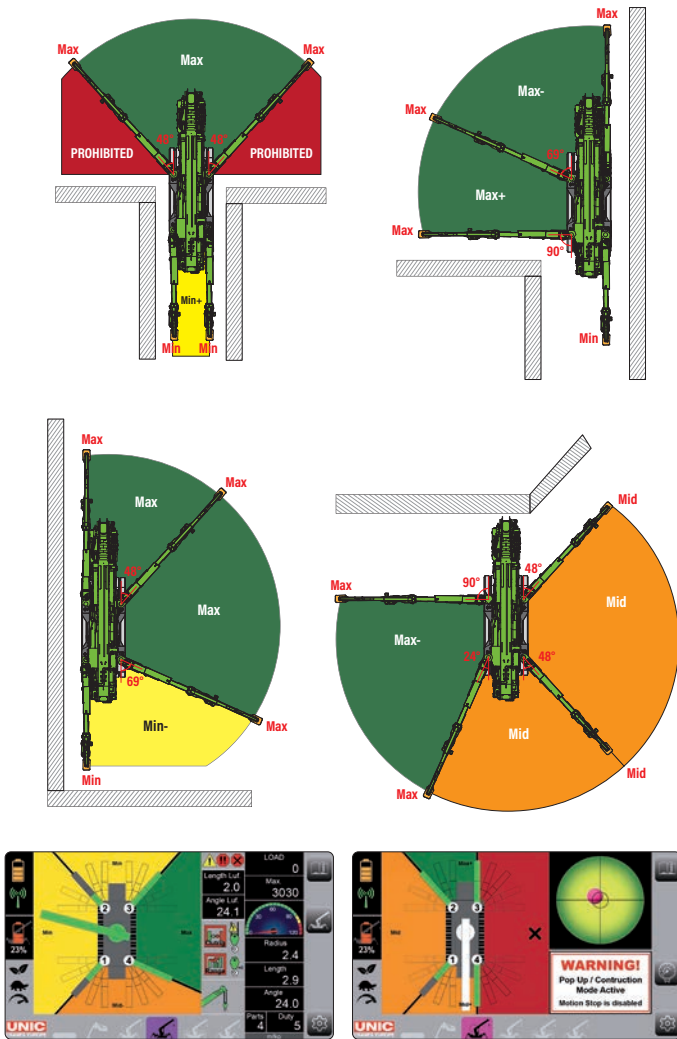
# LITHIUM-ION MINI CRANE

## WITH HYDRAULIC JIB



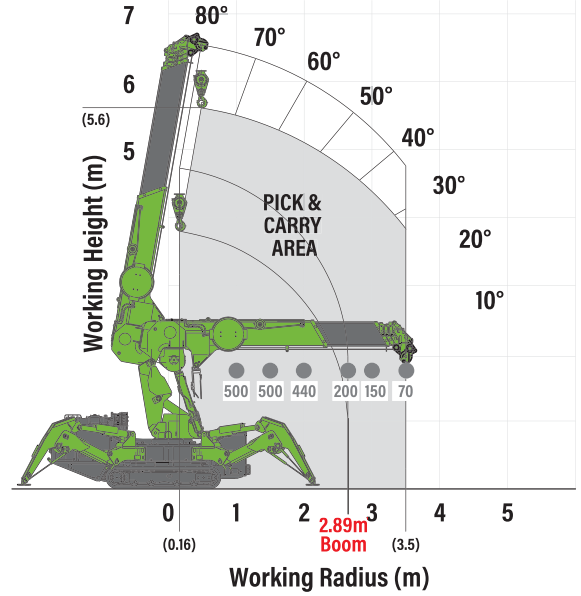
Spec Sheet

### VARIABLE OUTRIGGER - WORKING EXAMPLES

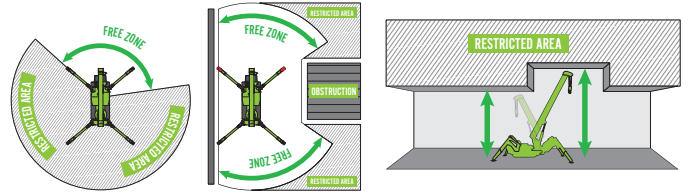


### WORKING RANGE - PICK & CARRY

The crane's versatile pick and carry function enhances productivity, enabling both lifting and transporting of loads efficiently on site.



### SLEW AND HEIGHT LIMITATION AS STANDARD



Operators can set slew limitation and variable slew limitation to avoid the crane working outside of its safe working envelope.

Users can also set both fixed and adjustable height limits to ensure the crane functions within safe operational parameters.

### VARIABLE OUTRIGGER WORKING MODES

The variable outrigger design features five different offsettable angles and three different extensions for each outrigger, allowing the UNIC UM445 to work in tighter, more restricted areas. The working modes around the crane change, depending on the outrigger angles and extensions.

