

The Böcker Crane RK 36 / 2400 on crawler chassis

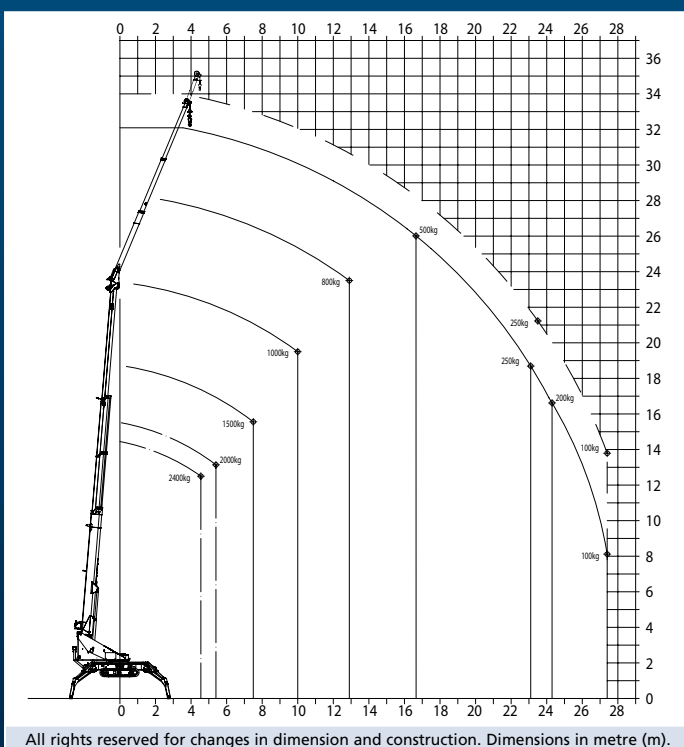
The compact crawler chassis of the RK 36 / 2400 crane ensures a particularly safe traction and grip as well as an equal pressure distribution on any ground. This feature allows working on gravel, sand or wet and soft lawn areas with payloads of up to 2,400 kilograms without any problem.

Thanks to a powerful Diesel engine the crane on crawler chassis has got sufficient power reserves in any situation. It can be equipped with an additional electric motor with the same performance data as the Diesel engine to enable it to work with a low noise level and emission-free, e.g. in closed spaces.

It can be used as a crane and as well as an access platform. The transformation from crane to platform mode takes very short time thanks to the EASY-LOCK system.



Duty chart



Technical specifications

Extension length max. [m]	34.00 (36.00 opt.)
Payload max. [kg]	1,500 (2,400 opt.)
Gross vehicle weight [kg]	4,500
Main boom angle approx. [degrees]	85
Jib length [m]	11.05
Jib extended incl. extension [m]	13.05
Jib retracted [m]	4.85
Jib variable/hydraulic [degrees]	0 – 165
Lifting speed approx. [m/min]	60
Footprint with outriggers on both sides (L x W) [m]	5.40 x 5.40
Footprint with outriggers on one side (L x W) [m]	7.20 x 3.60
Vehicle dimensions (L x B x H) [m]	8.44 x 2.11 x 2.82